

American Oystercatcher Post-Breeding Survey
 Brigantine Inlet
 Observation dates = 7/12/2010 - 11/22/2010
 Flock count = 20 - 284 individuals

Galloway Township

Atlantic Ocean

Elder Island

Brigantine Inlet

Highest Count = 284
 on 10/23/2010

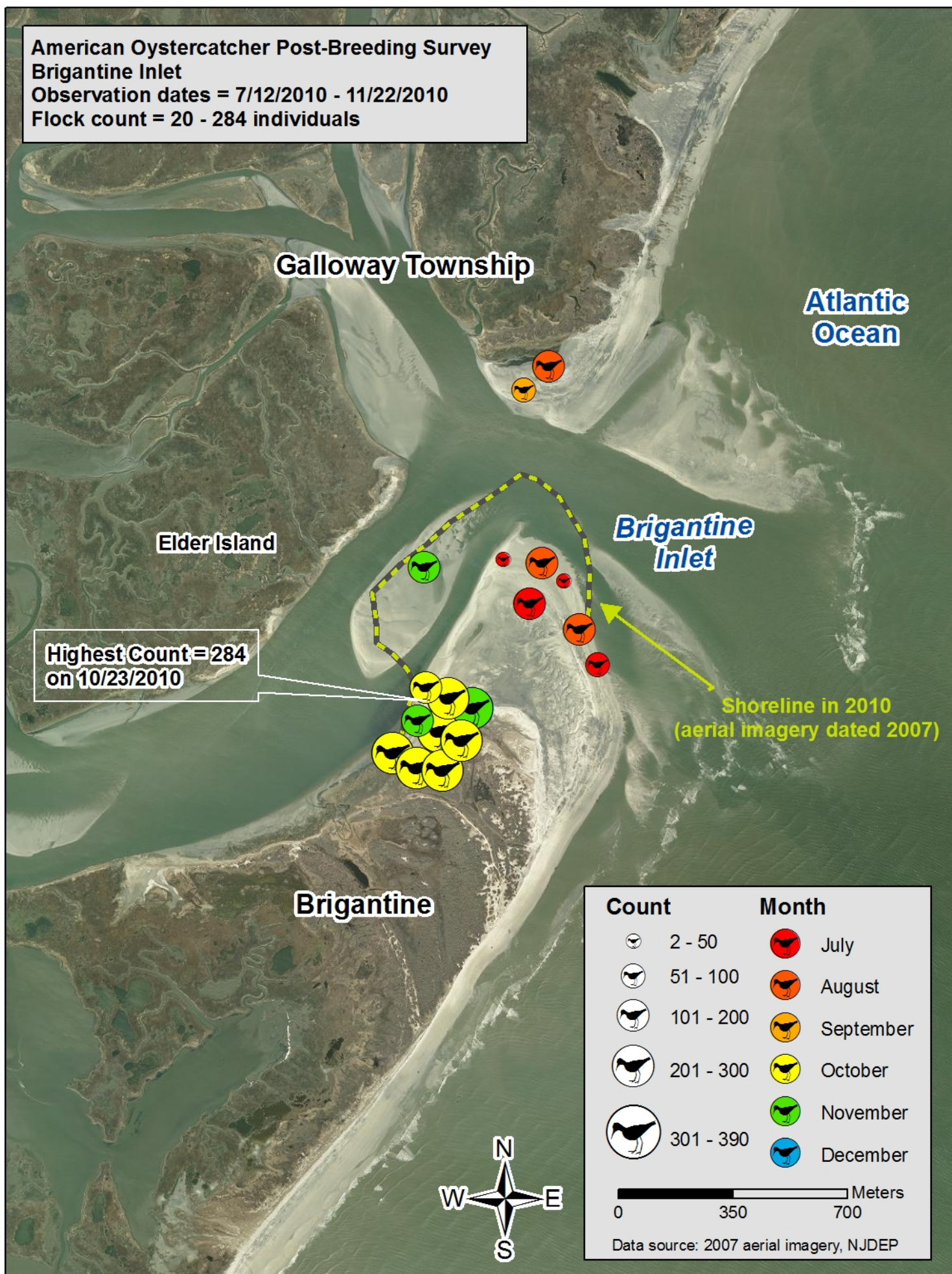
Shoreline in 2010
 (aerial imagery dated 2007)

Brigantine

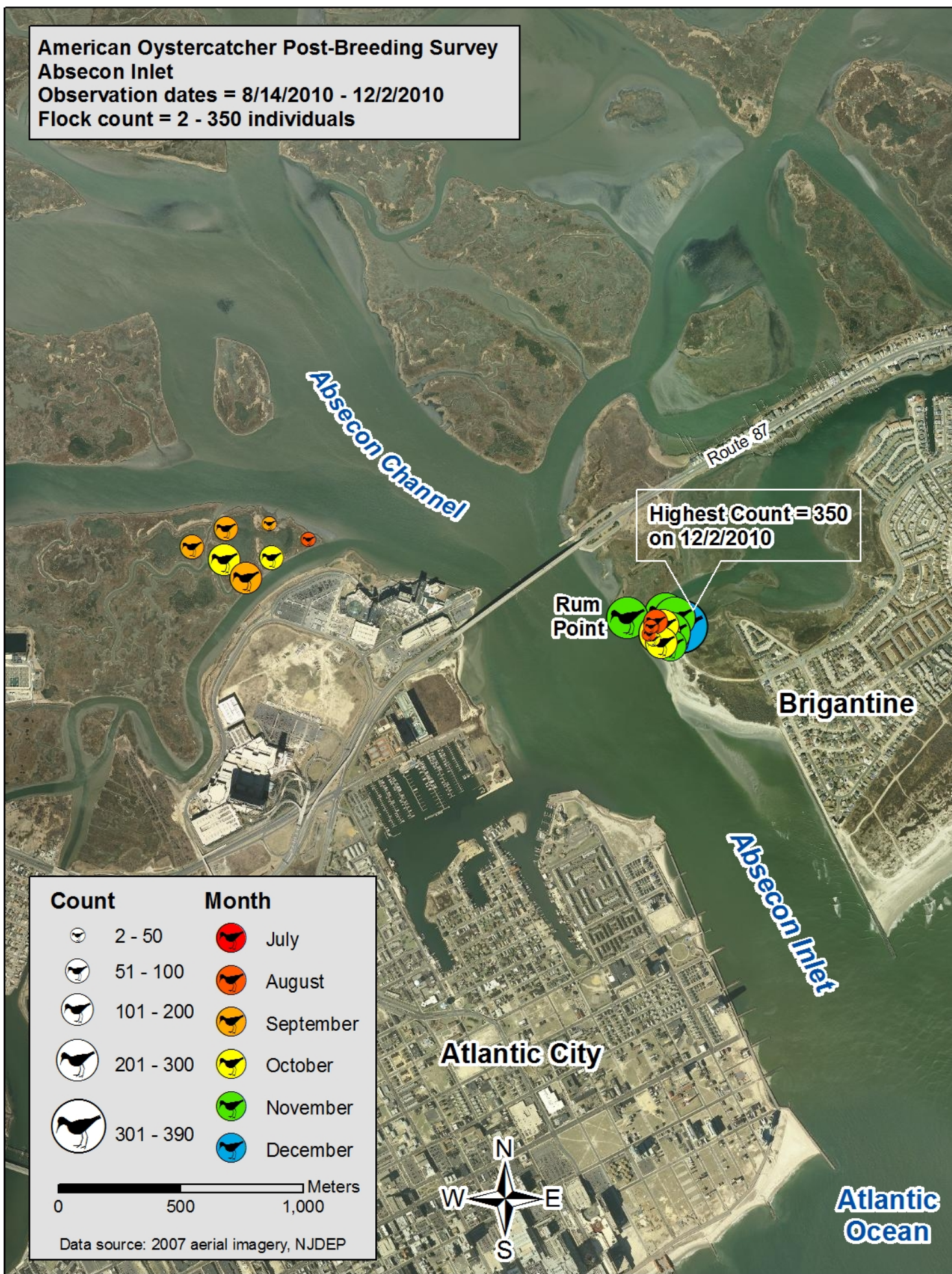
| Count | | Month | |
|-------|-----------|-------|-----------|
| | 2 - 50 | | July |
| | 51 - 100 | | August |
| | 101 - 200 | | September |
| | 201 - 300 | | October |
| | 301 - 390 | | November |
| | | | December |

0 350 700 Meters

Data source: 2007 aerial imagery, NJDEP



American Oystercatcher Post-Breeding Survey
Absecon Inlet
 Observation dates = 8/14/2010 - 12/2/2010
 Flock count = 2 - 350 individuals



Highest Count = 350
 on 12/2/2010

Rum Point

Brigantine

Absecon Inlet

Atlantic City

Atlantic Ocean

| Count | Month |
|-----------|-----------|
| 2 - 50 | July |
| 51 - 100 | August |
| 101 - 200 | September |
| 201 - 300 | October |
| 301 - 390 | November |
| | December |

0 500 1,000 Meters

Data source: 2007 aerial imagery, NJDEP



American Oystercatcher Post-Breeding Survey
 Great Egg Harbor Inlet
 Observation dates = 8/13/2010 - 12/7/2010
 Flock count = 10 - 159 individuals



Highest Count = 159
 on 10/8/2010

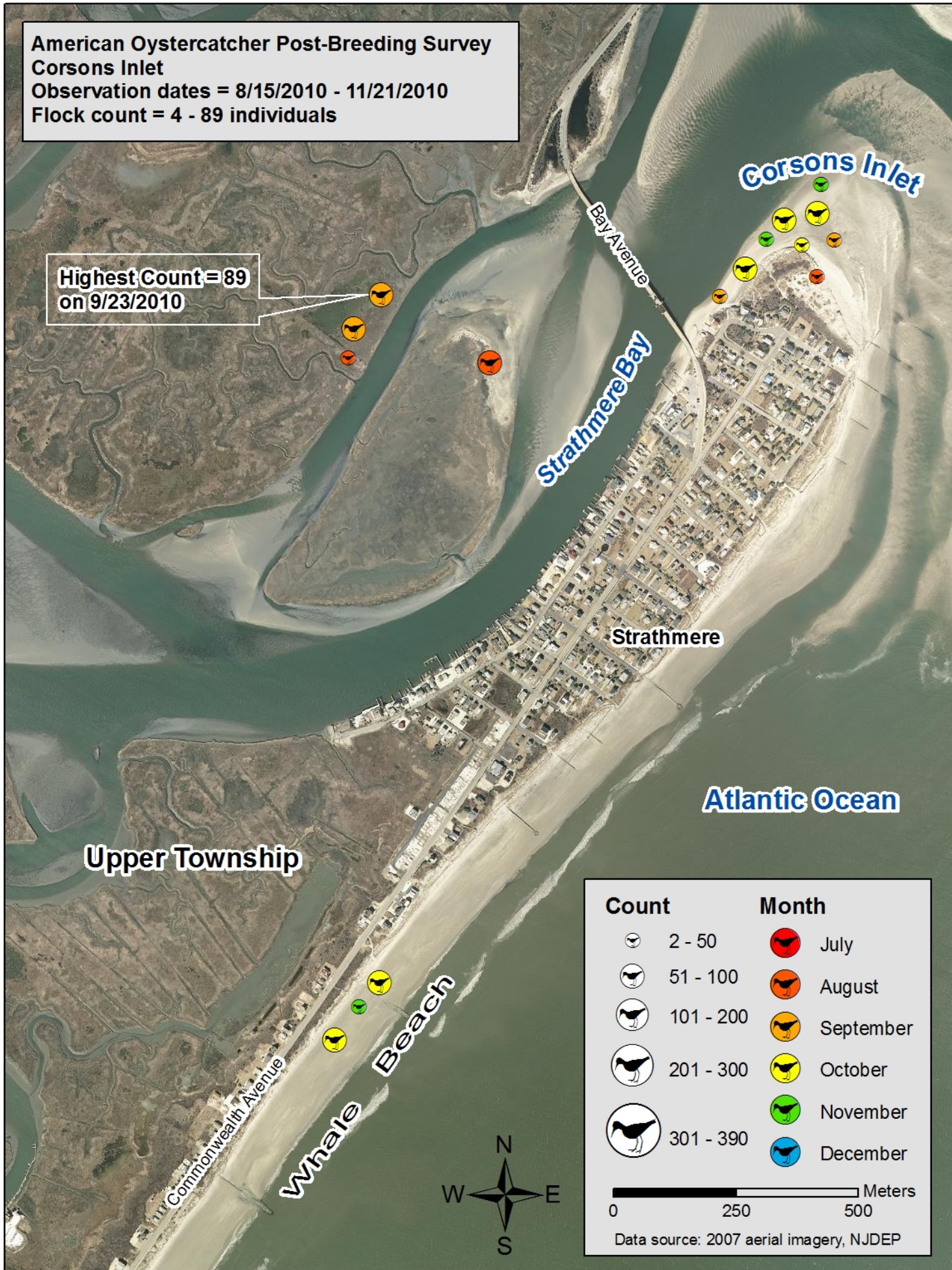
| Count | Month |
|-----------|-----------|
| 2 - 50 | July |
| 51 - 100 | August |
| 101 - 200 | September |
| 201 - 300 | October |
| 301 - 390 | November |
| | December |

0 500 1,000 Meters

Data source: 2007 aerial imagery, NJDEP

American Oystercatcher Post-Breeding Survey
 Corsons Inlet
 Observation dates = 8/15/2010 - 11/21/2010
 Flock count = 4 - 89 individuals

Highest Count = 89
 on 9/23/2010



| Count | Month |
|-----------|-----------|
| 2 - 50 | July |
| 51 - 100 | August |
| 101 - 200 | September |
| 201 - 300 | October |
| 301 - 390 | November |
| | December |

0 250 500 Meters

Data source: 2007 aerial imagery, NJDEP

**American Oystercatcher Post-Breeding Survey
Townsend's Inlet**
 Observation dates = 8/15/2010 - 12/5/2010
 Flock count = 9 - 108 individuals

Dennis Township

Middle Township

Sea Isle City

Highest Count = 108 on 10/6/2010

Ocean Drive

Townsend's Inlet

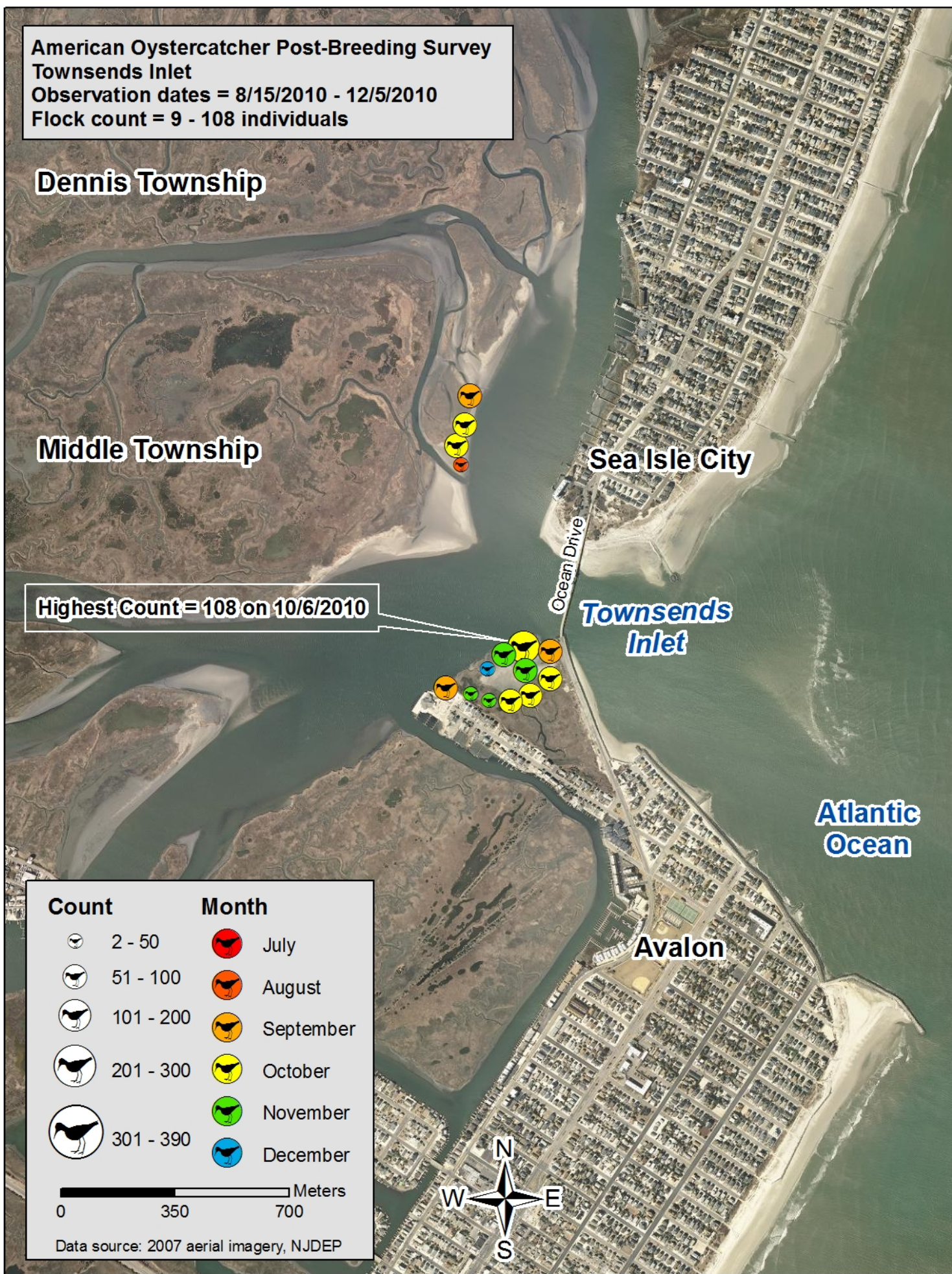
Atlantic Ocean

Avalon

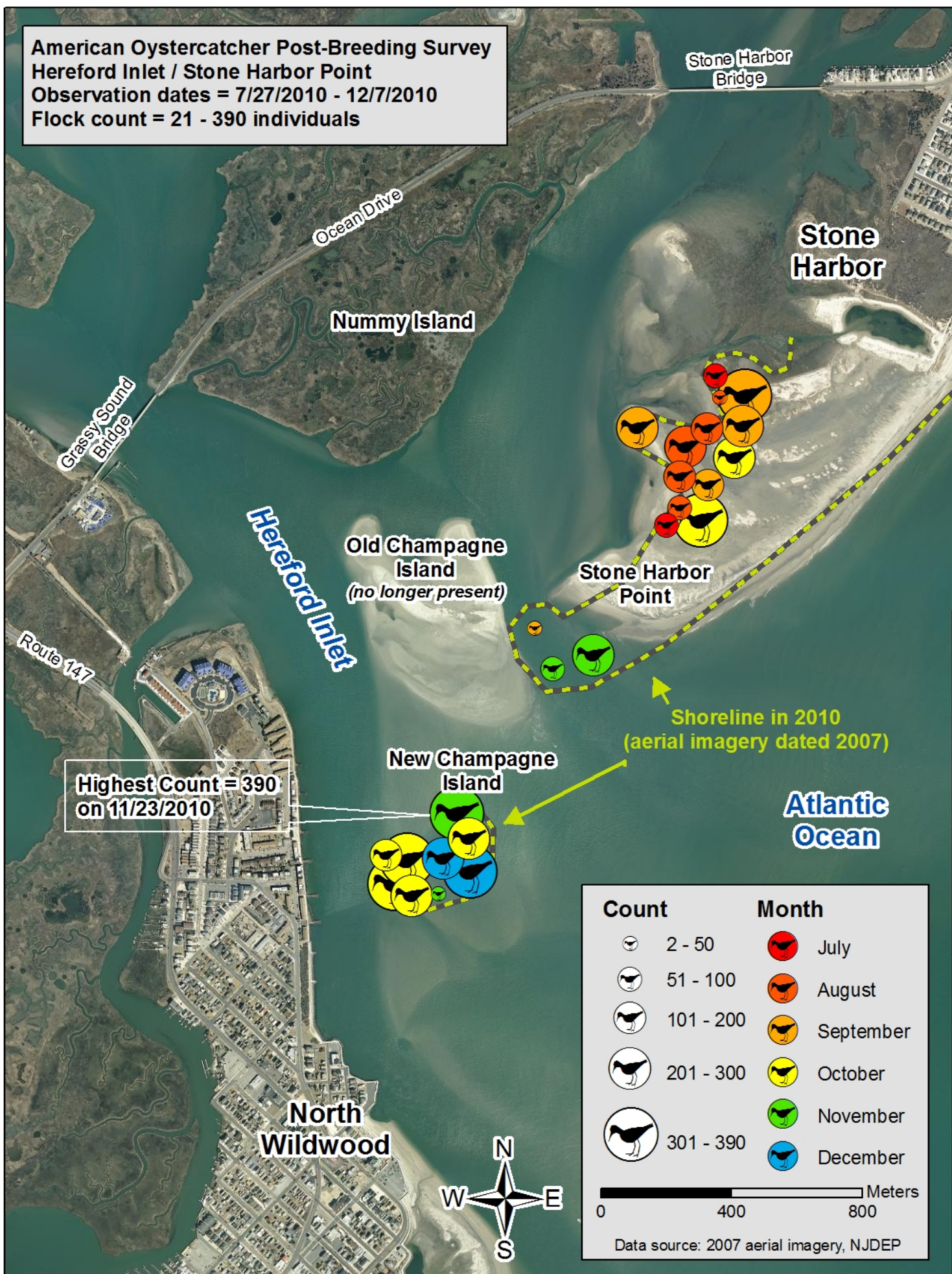
| Count | Month |
|-----------|-----------|
| 2 - 50 | July |
| 51 - 100 | August |
| 101 - 200 | September |
| 201 - 300 | October |
| 301 - 390 | November |
| | December |

0 350 700 Meters

Data source: 2007 aerial imagery, NJDEP



American Oystercatcher Post-Breeding Survey
Hereford Inlet / Stone Harbor Point
 Observation dates = 7/27/2010 - 12/7/2010
 Flock count = 21 - 390 individuals



Highest Count = 390
on 11/23/2010

| Count | | Month | |
|-------|-----------|-------|-----------|
| | 2 - 50 | | July |
| | 51 - 100 | | August |
| | 101 - 200 | | September |
| | 201 - 300 | | October |
| | 301 - 390 | | November |
| | | | December |

0 400 800 Meters

Data source: 2007 aerial imagery, NJDEP