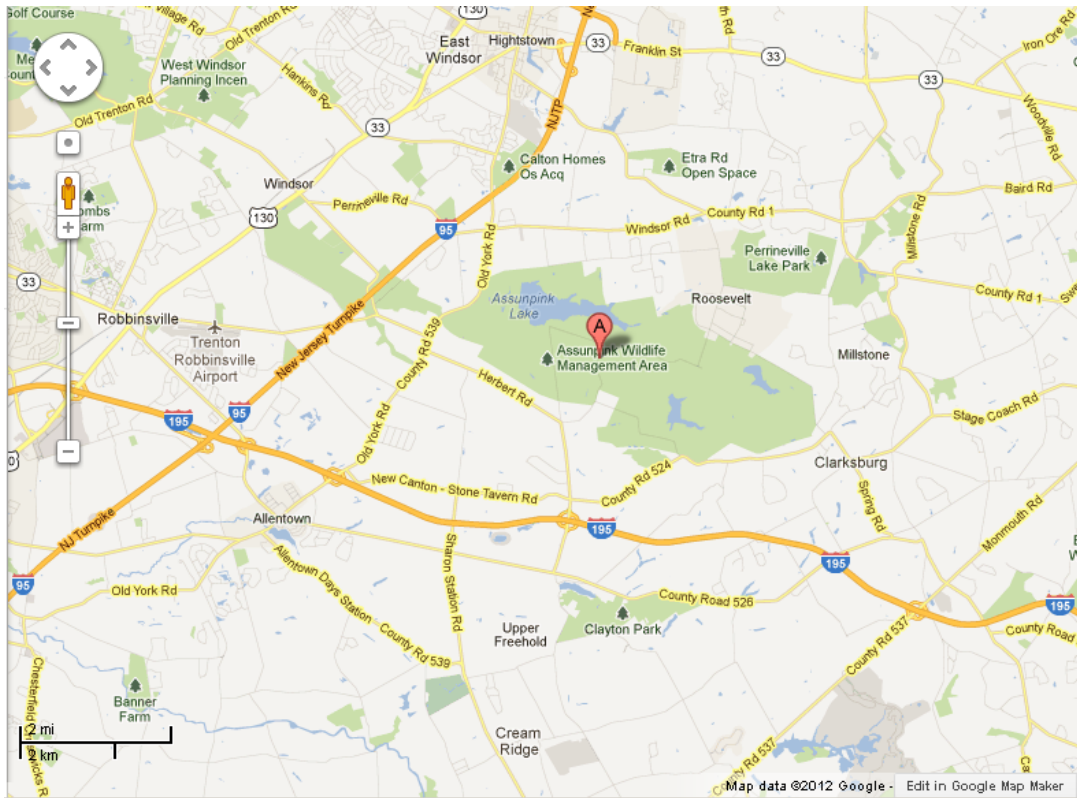

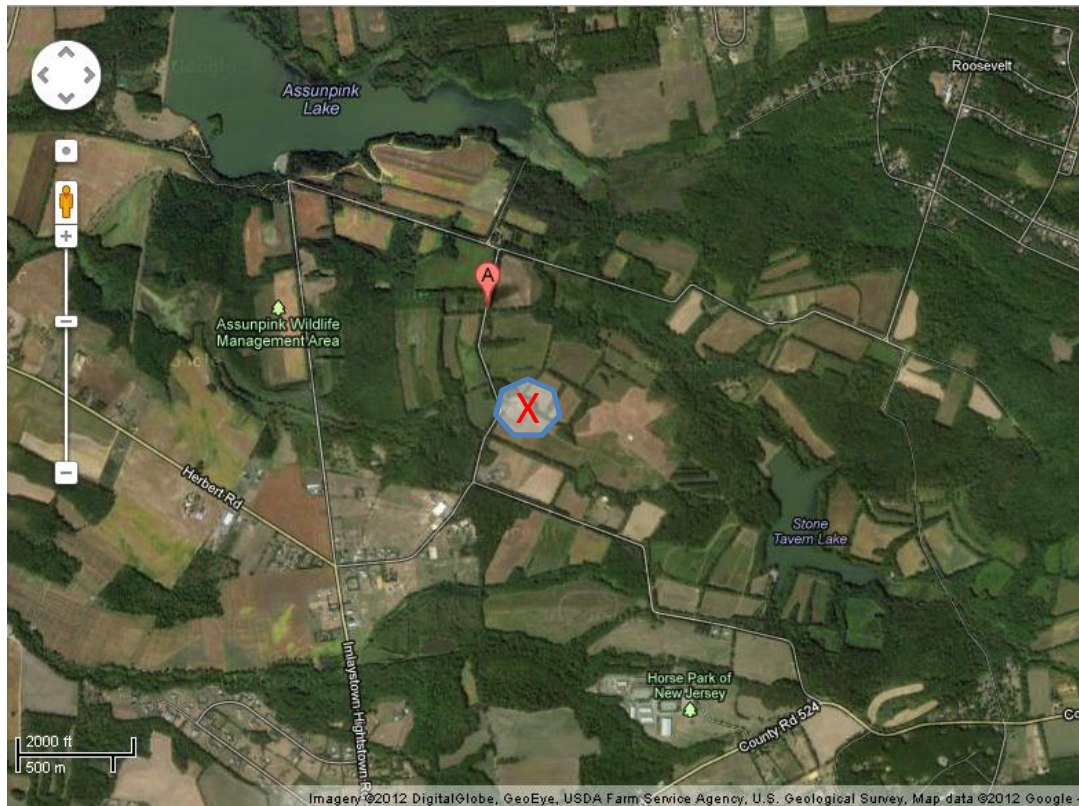


# Directions to Assunpink Wildlife Management Area Conservation Center



1 Eldridge Road, Upper Freehold, NJ in Google Maps brings you to A. Conservation Center is at .



### **From the South:**

Take Garden State Parkway North. Exit the Parkway at exit 58 Turn LEFT onto CR-539 at the top of the ramp, travel 22 miles

At Whiting you'll merge with CR-530; follow signs to stay on CR-539 (North). You'll cross SR-70 (Wawa on the corner). Stay on CR-539 for another 12 miles; this will take you through Fort Dix Military Reservation.

After crossing CR-537 (Monmouth Rd- there is a traffic light here and another Wawa) travel approximately 3.5 miles, and CR-539 will turn to the Left; if you stay straight this will put you on Sharon Station Rd. You'll come to one traffic signal; go straight through it.

You'll pass under I-195 and come up to a stop sign Turn RIGHT onto CR-524. Travel 1.5 miles and Turn LEFT onto Imlaystown Hightstown Rd (there is a development with large houses on the left). Travel 1 mile (you'll go over a narrow bridge) to the next stop sign. Turn RIGHT at the stop sign, the Central Region Office will be .5 miles down on the right, pass that, and as the road bends to the left the Conservation Center will be on your right (up the hill).

### **From North, West, or East:**

From I-295 (Exit 60) or the New Jersey Turnpike (Exit 7A) use I-195 E, or if coming from the east take I-195W. Take Exit 11 – Imlaystown Coxs Corner off of I-195. Turn left at the top of the ramp and go to stop sign. Go straight (road jogs slightly to the left) for 1 mile and turn right at the next stop sign. The Central Region Office will be .5 miles down on the right, pass that, and as the road bends to the left the Conservation Center will be on your right (up the hill).