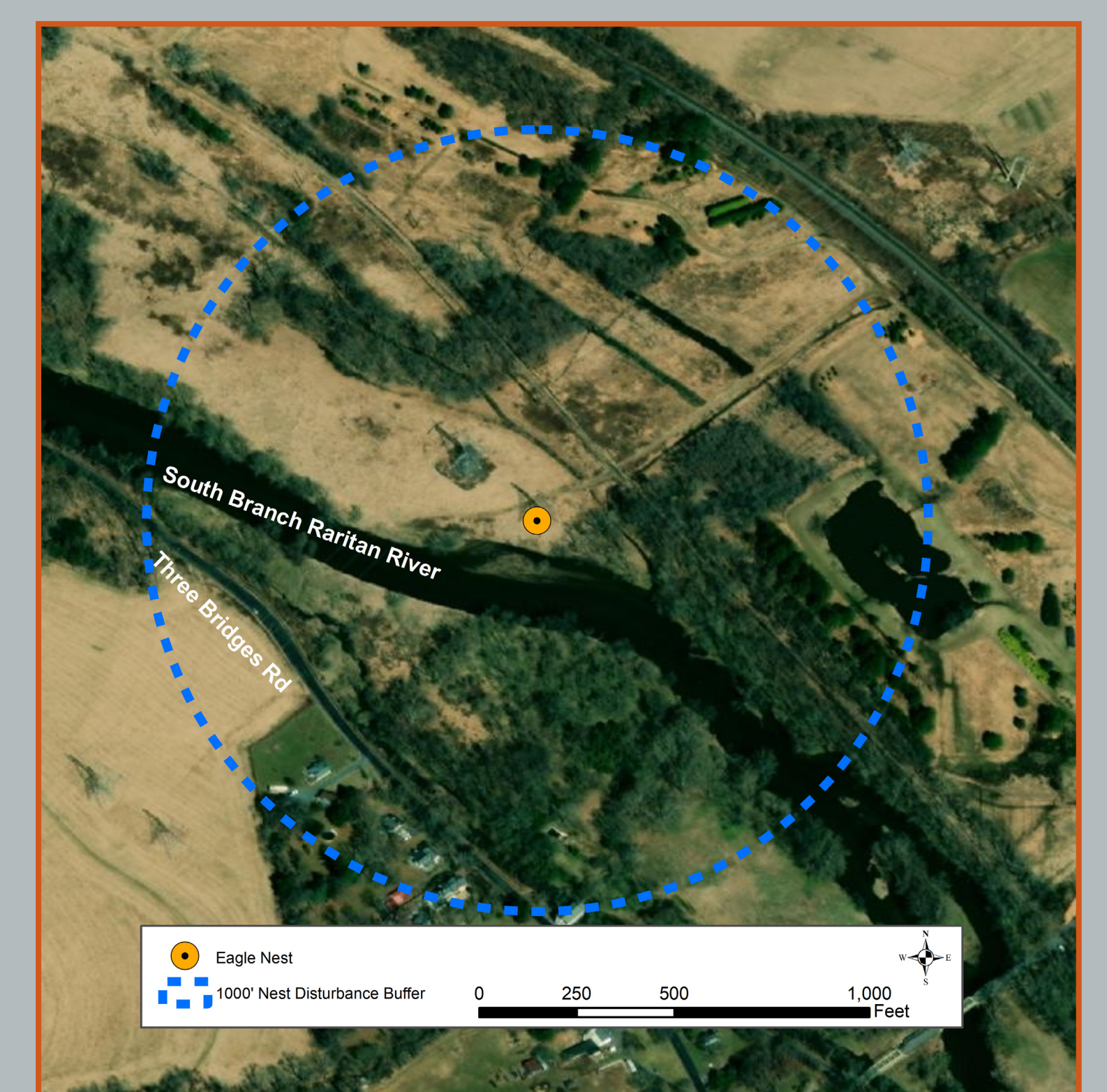


Roseland to Pleasant Valley

New Nest Platform for the Three Bridges Eagles



PSE&G is replacing older lattice transmission towers with new Y-frame monopoles between Lambertville and Roseland. The tower at Three Bridges with the Bald Eagle nest is being replaced with a new monopole in the same location. In cooperation with the New Jersey Department of Environmental Protection (NJDEP) and the United States Fish & Wildlife Service (USFWS), PSE&G has designed a nest platform to secure the original nest onto the new monopole and encourage the eagles to return to the nest site when construction is complete.



Construction Schedule

During the eagle's non-breeding season, PSE&G plans to:

1. Carefully remove the eagle nest and store it securely for the duration of construction.
2. Replace the current lattice transmission tower with a new Y-frame monopole.
3. Reinstall the nest on a nest platform mounted to the top of the new monopole.
4. Install the new wires.

Viewing the Nest

Eagles are sensitive to human presence during the breeding season and observers should avoid approaching within 1000 feet of an eagle nest. Observers viewing the nest from Three Bridges Road should remain in their car or behind vegetation when possible to reduce risk of nest disturbance. When the work is complete and in anticipation the eagles return, the nest will be viewable online with a nest camera in partnership with Conserve Wildlife Foundation of New Jersey at ConserveWildlifeNJ.org.

Three Bridges Bald Eagle Nest

Bald Eagles built their nest on PSE&G's transmission tower in 2014 and have successfully raised 2 young each year. In New Jersey, eagles begin nest building and courtship in early January and begin laying eggs in February. Eagles lay 1-3 eggs and incubate the eggs for 5 weeks. Once the eggs hatch, adults protect and care for the eaglets until they learn to fly at 3 months old, typically in early July. The young eaglets will continue to be fed by the adult eagles until they learn to hunt for themselves.

PSE&G coordinates each year with the NJDEP to monitor the nest, band the young for tracking, and ensure the eagles are undisturbed during the breeding season (January 1 – July 31). PSE&G has planned the replacement of this transmission tower outside of the breeding season (August 1 – December 31) to minimize disturbance to the eagles. PSE&G has NJDEP and USFWS authorization to temporarily remove and store the nest during construction and monitor the eagles.

Commitment to the Environment

Our management of the Three Bridges Bald Eagle Nest is part of PSE&G's corporate commitment to environmental stewardship, to protect the environment where we all work and live. PSE&G protects Bald Eagles throughout our service territory through partnerships with NJDEP, USFWS, national eagle experts, and local wildlife conservation groups.

Questions?

Questions about the Roseland Pleasant Valley Project or how PSE&G is helping to conserve this eagle nest? Contact PSE&G's Project Outreach Team at 1-888-378-0078 or www.pseg.com/rpv



PSE&G

