

# New Jersey Department of Environmental Protection Fish & Wildlife

Dave Golden, Assistant Commissioner  
Jason Hearon, Assistant Director  
Kathleen Clark, Chief  
Endangered and Nongame Species Program

## New Jersey Bald Eagle Project, 2024

**Prepared by** Melissa Roach, Larissa Smith, & Kathleen E. Clark

### **Project Staff:**

Kathleen Clark, Larissa Smith, Melissa Roach, Dr. Erica Miller,  
John Heilferty, and Ben Wurst



Photo by Mark Gorman



*New Jersey Bald Eagle Project Report, 2024*



# New Jersey Bald Eagle Project, 2024

Prepared by: Melissa Roach, Larissa Smith, and Kathleen Clark

Project personnel: Kathleen Clark, Larissa Smith, Melissa Roach, Dr. Erica Miller, John Heilferty, and Ben Wurst

## **Summary**

NJDEP Fish & Wildlife's Endangered and Nongame Species Program (ENSP) biologists, Conserve Wildlife Foundation (CWF) staff, and volunteer observers located and monitored Bald Eagle nests and territories throughout the duration of the 2024 nesting season. Two hundred ninety-three nest sites were monitored, of which, a record 264 were documented to be active (with eggs) and 29 were territorial or "housekeeping" pairs. There were 20 new eagle pairs found this year.

We had 241 nests with known outcomes (i.e., failed or successful fledging). Of these, 182 (76%) successfully fledged at least one young. In total, there were 288 fledglings resulting in a productivity rate of 1.2 young per active nest. Nests with unknown outcomes were not included in the productivity calculation.

## **Methods**

### **Nest Survey**

Nest sites are monitored January through July or through fledging. Volunteers and staff monitor the majority of nests from a distance of at least 1,000 feet using binoculars and spotting scopes for periods of two or more hours each week. Observers record all data including number of birds, courtship or nesting behaviors, incubation, feeding, and other parental care behaviors that provide essential information on nesting status. CWF staff contact volunteers weekly with an update and are available to discuss observer questions and data. Dates are recorded for incubation, hatching, banding, fledging, and, if applicable, nest failure. A nesting territory is considered "occupied" if a pair of eagles is observed in association with the nest and there is some evidence of recent nest maintenance. Nests are considered "active" if a bird is observed in an incubating position or if eggs or young are detected in the nest.

Observers report other Bald Eagle sightings to ENSP or CWF biologists, who review the information for clues to potential new nest locations. ENSP staff and volunteers investigate territorial Bald Eagles for possible nests through field observations. When evidence suggests a probable location, biologists may conduct ground or aerial surveys of the region to locate a nest. Following guidance from the US Fish and Wildlife Service's post-delisting monitoring plan (USFWS 2009), we maintain a list of occupied nests and territories for population monitoring. This list approach also supports the NJDEP's Land Resource Protection activities.

When necessary, nests are protected from disturbance with barriers or posted signs. Staff works in partnership with landowners and land managers to cooperatively protect nests. Nest monitors notify ENSP staff immediately if any unusual or threatening activities are seen around the nest site. The NJDEP Fish & Wildlife's Law Enforcement Conservation Police Officers act to enforce protection measures as needed and provide routine assistance as well.

At select sites, ENSP biologists band nestlings that are between five and eight weeks old. A biologist climbs the nest tree and places nestlings into a large duffel bag and lowers them, one at a time, to the ground. A team records measurements (bill depth and length, eighth primary length, tarsal width, and weight) and bands each eaglet with a federal band and a green state color band with an alpha-numeric code. A veterinarian examines each bird and takes a blood sample for analysis. Blood is collected and stored following techniques in Bowerman et al. (1994). Samples are stored frozen pending analysis by a technical lab. Nest trees are generally not climbed the first season to avoid associating disturbance with the new site.

## **Results**

### **Nest Survey**

There was a record number of 264 active nests this year (nests known to have at least one egg) with 29 pairs establishing or maintaining a territory (but did not lay eggs) bringing the grand total of active *pairs* to 293. Of the 264 active nests, 23 had unknown outcomes. These were not included in productivity analysis.

One hundred eighty-two (76%) nests were successful and produced a cumulative total of 288 young resulting in a productivity rate of 1.24 young per active nest. While this is above the ~1.0 young/nest required to maintain a stable population, this is the second lowest productivity rate in the past 10 years.

Most nests were located in the southern portion of the state, particularly within 20 km of Delaware River and Bay (Figure 2). The majority of nests were located on private land, while the rest were on state, federal, county, and conservation-dedicated lands. Disturbance was an issue at some nests; posting and regular surveillance by staff and nest monitors remained essential to increase the chance of success.

All monitored nests and their significant dates of the nesting season are detailed in Table 1 below. Table 2 is a list 87 nests that were either unused this season or could not be monitored.

Figure 1. Number of Bald Eagle nests and young fledged in NJ, 1990–2024. Blue bars = number of nests, and blue lines = number of young produced each year. In 2024, 264 nests were active and 288 young were produced from 241 known-outcome nests.

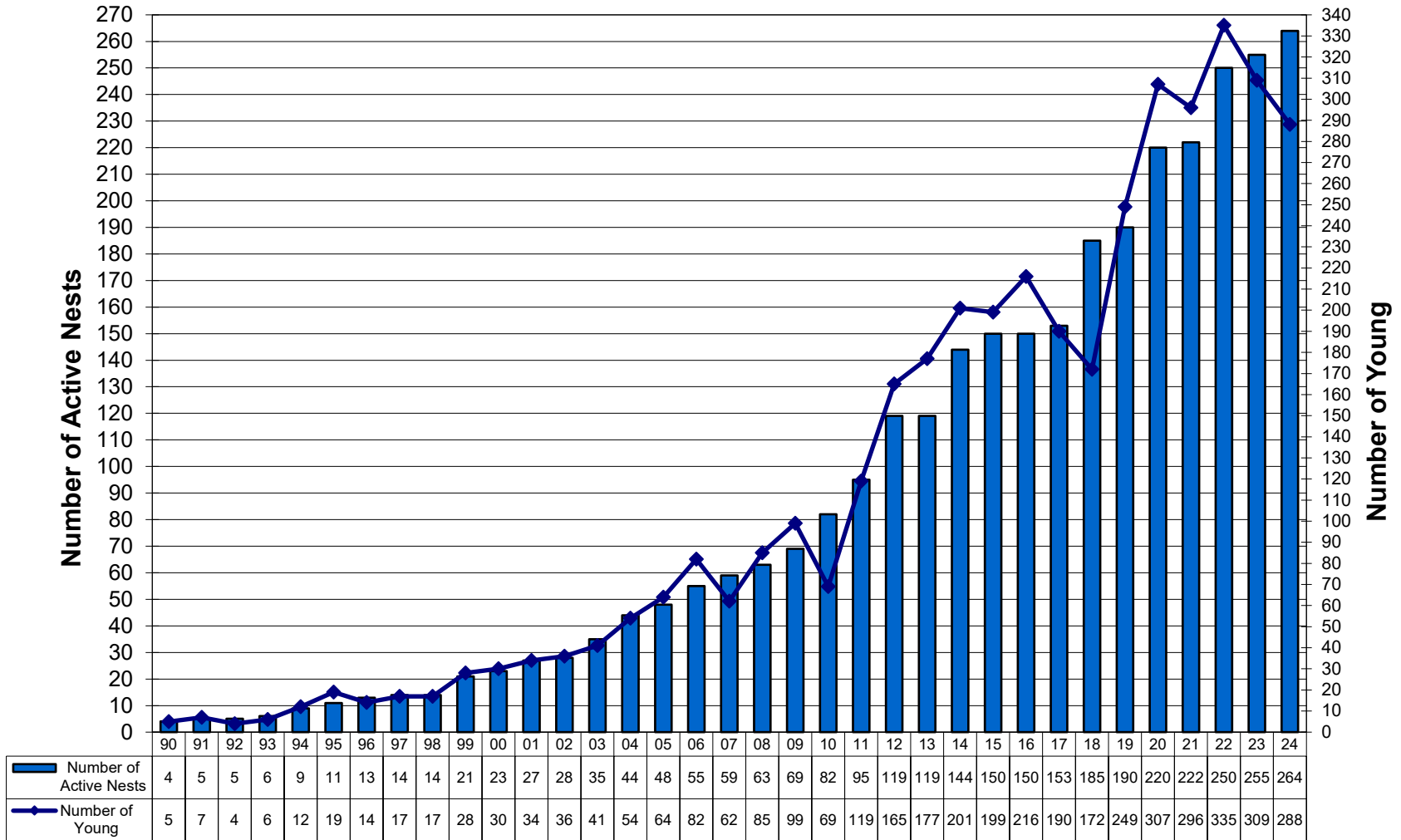


Figure 2a. Map of active (circle) and territorial (star) Bald Eagle nests in NJ in 2024.

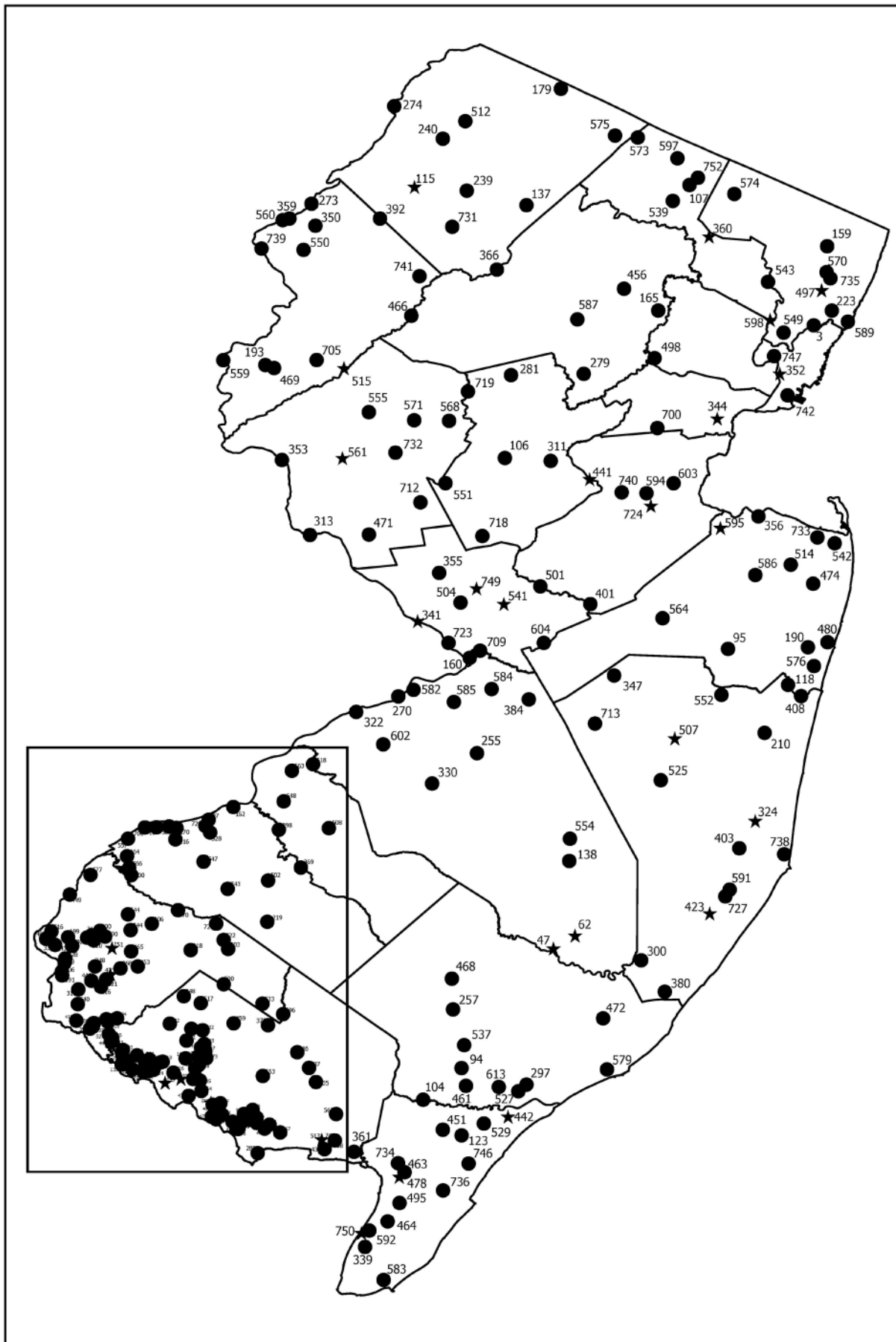
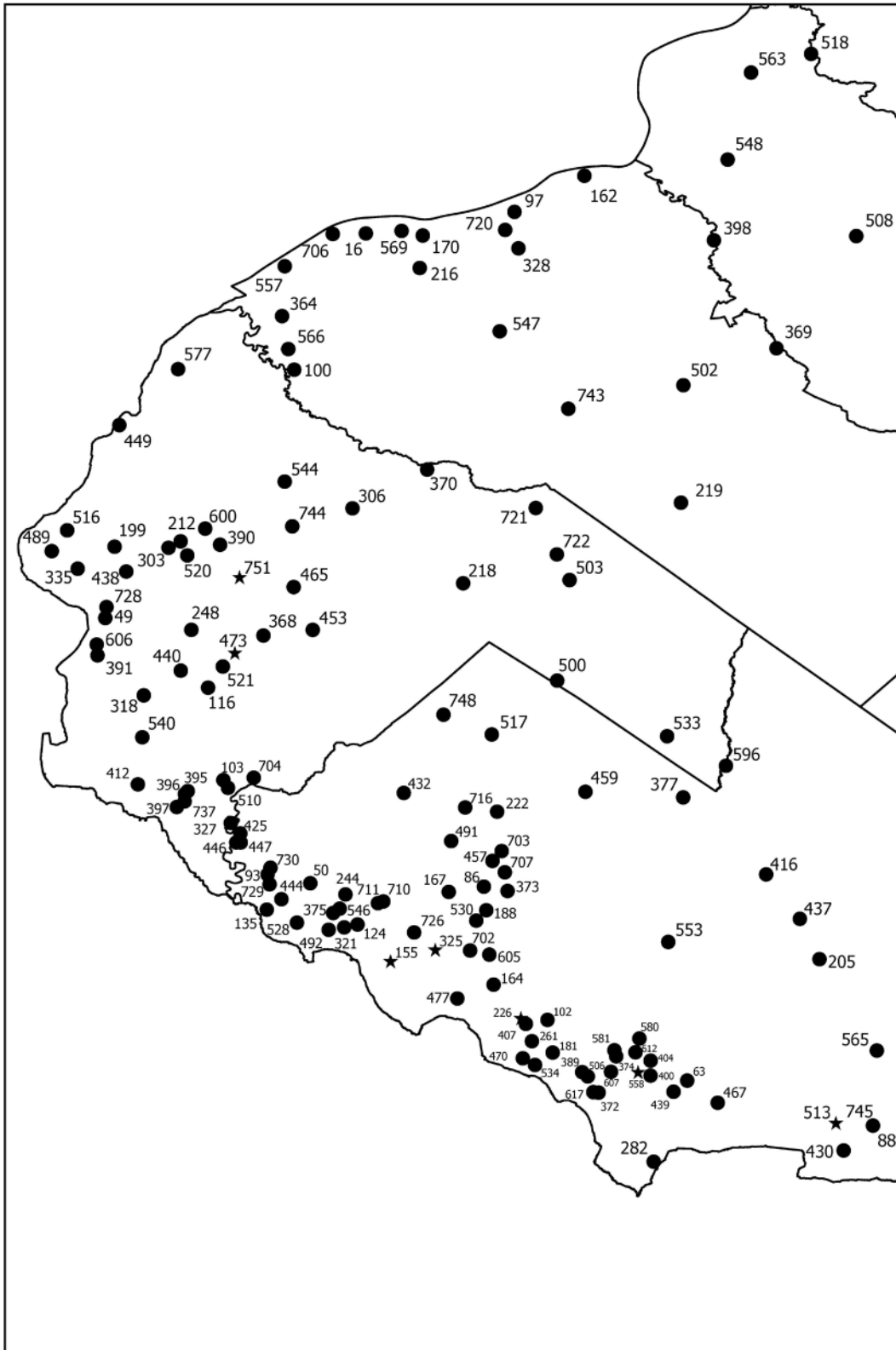


Figure 2b. Inset area of southwestern counties of active (circle) and territorial (star) Bald Eagle nests.



**Nest Key:**

<b>Nest Name</b>	<b>#</b>	<b>Nest Name</b>	<b>#</b>	<b>Nest Name</b>	<b>#</b>	<b>Nest Name</b>	<b>#</b>
Allamuchy Pond	741	Edgewater	589	New Hampton	515	Tuckahoe C	529
Alloway Lake	453	Egg Harbor	94	Newport B	425	Turkey Point A	612
Alloways Creek C	116	Egg Island	282	Newport C	446	Turkey Point B	400
Alloways Creek E	440	Elmer	503	Newport D	447	Turnersville	369
Alloways Creek F	318	English Creek	613	Newton Reservoir	137	Upper Greenwood	573
Arrow Island	739	Far Hills/Ravine Lake	281	Norburys	750	Upper Millstone	401
AshBrook	700	Ferry Road	557	Nutley	598	Upper Oldmans	370
Atlantic City	579	Fishing Creek	339	Oberlin	516	Upper Ramapo	574
Atlantic Highlands	733	Five Mile Run	504	Oceanville	472	Wading River	62
Audubon	548	Flat Top	530	Oldman's Creek	100	Wanaque A	107
Avalon	736	Forked River	324	Oldwick	719	Wanaque B	539
Ballanger Creek East	300	Fortescue	372	Oradell Reservoir	159	Wanaque C	752
Bassetts Bridge (Walkkill)	179	Fortescue C	506	Overpeck Creek	223	Waretown	403
Bayonne	742	Fortescue D	617	Paradise	720	Warfle	404
Bay Point Road A	226	Fort Dix B	713	Parsippany	165	Wawayanda	575
Bay Point Road B	407	Fort Mott	489	Parsonage Run	517	Weatherill	729
Bayside A	135	Fresh Creek	591	Parkers Creek	474	Wheaton Island	93
Bayside B	444	Gibbstown	216	Patcong B	297	Wheaton Island B	730
Beaver Dam-North	580	Great Bay Blvd.	380	Paterson	543	White's Pond	731
Beaver Dam (osp.)	374	Great Swamp	279	Pedericktown	566	Whiting	525
Beaver Dam-West	581	Green Creek	592	Pemberton	255	Woodschurch	732
Beesley's Point	442	Grossup	540	Pennington	355	Wreck Pond Brook	576
Berrys Creek	549	Hack Site	558	Penns Grove	577	Yards Creek	350
Bidwell (East)	495	Hackett (Salem)	465	Pennsauken CC	518		
Blairstown	550	Hackettstown	466	Penns Neck A	199		
Blews Run	702	Hansey Creek	467	Penns Neck B	438		
Bogota	497	Harmony	559	Pilesgrove	544		
Boonton	456	Hartshorne Woods Park	542	Pine Tavern	722		
Branchburg	551	Heislerville	88	Pine Tavern B	721		
Bridgeton	457	Heislerville B	745	Pointers Auburn	520		
Bridgeton-Garfield	703	Horicon Lake	507	Pointers Auburn B	600		
Brielle (Tr. Is)	408	Husted's Landing	325	Point View Reservoir	360		
Buckhorn	704	Hyper Humus	239	Poxono Island	273		
Bulls Island	313	Jacobstown	384	Prosperstown	347		
Burlington Island	270	Jake's Landing	734	Quinton	368		
Bustleton CR	582	Johnson Park	441	Quinton B	473		
Buttermilk	705	Keansburg	356	Quinton C	521		
Canoe Brook (Reservoir)	498	Kearny	352	Rainbow Lake	533		
Cape May	583	Kearny Marsh	747	Rancocas B Tower	602		
Carasaljo	552	Keasbeys Creek	248	Raritan-Keasbey	603		
Carmel	459	Kettle Creek	210	Readington	568		
CCIA (Cumberland)	377	Kin-Buc	594	Repauno	569		
Cedar Hill (Cumberland)	491	Kirkwood Lake	508	River Edge	570		
Cedar Run (Ocean)	423	Labar Island	560	Riverview	723		
Cedar Swamp Creek	123	Lake Hopatcong B	366	River Barge Park	3		
Cedarville Cell Tower	553	Lake Lenape	257	Robbins Lane	534		
Centerton	500	Linden	344	Robbinsville	604		
Chatsworth	138	Little Swartswood	115	Round Valley	571		
Chatsworth B	554	Lockatong Creek	561	Sadie Lane	430		

Chesterfield	584	Long Bridge	510	Salem River	306
Chester Island	706	Lower Patcong	527	Sayres Neck	164
Clinton	555	Ludlum Bay	746	Sayres Neck B	477
Cohansey (Detullio)	707	Mad Horse Creek	327	Sayres Neck C	605
Cohansey (Greenwich A)	50	Major Run	744	Sayreville	724
Cohansey (Greenwich B)	244	Makepeace Lake	468	School House	389
Cohansey (Hopewell East)	86	Manasquan Reservoir	95	Seabrook	390
Cohansey (Hopewell West)	167	Manasquan River	118	Sea Breeze B2	155
Cohansey (Middle Marsh A)	124	Mannington Meadows A	212	Sea Breeze Abbot Crk	726
Cohansey (Middle Marsh C)	321	Mannington Meadows C	303	Sedge	738
Cohansey (Middle Marsh D)	375	Mantua A4	97	Seeley-Cohansey	748
Cohansey (Middle Marsh E)	546	Mantua Creek B	328	SFE A	391
Cohansey (Ragged Island)	492	Manville	311	SFE Tower B	606
Cohansey (Tindells Landing)	188	Mary Elmer	716	Shark River	190
Cohansey CC	373	Mattison Reservoir	512	Sheepkill Pond	607
Columbus tower	585	Matawan Cell	595	Shiloh Tower	432
Corbin City	461	Matts Landing 2	513	Silver Lake	219
Cranbury Neck	501	MR(Burcham)	205	South Dennis	478
Cross Farm	586	MR (Dorchester)	565	South River-Atlantic	537
Crosswicks Creek	160	MR (Millville North)	416	Stafford-Beach	727
Crosswicks Creek B	709	MR (Muddy Run)	596	Stillwater (Paulins Kill)	392
Culvers Gap	240	MR (Peek Preserve)	437	Stipson Island Area	361
Daretown	218	Medford	330	Stow Creek (Canton) A	103
Deepwater	449	Mercer County GC	541	Stow Creek E	395
Delanco	322	Merchantville	563	Stow Creek F	396
Dennis Creek 2	463	Merrill Creek A	193	Stow Creek G	397
Denville	587	Merrill Creek B	469	Stow Creek H	737
Devil's Gut	412	Mickleton	547	Sunset Lake	222
Dias Creek (East)	464	Miery Run	743	Supawna Meadows A	49
Dingman's Ferry	274	Milford	353	Supawna Meadows B	335
Dividing Creek	63	Millhurst	564	Supawna West	728
Dividing Creek B	439	Mond's Island	16	Swedes Run Crossing	751
Donaldson	740	Money Island	470	Swedesboro (Birch Cr)	364
Duffield Run	502	Monksville Reservoir	597	Sylvan Lake tower	480
Duke (Raritan River)	106	Mountain View	718	Teaneck	735
DuPont/Raccoon Creek	170	Mt Airy	471	Timber Creek	398
Eagle Manor A	710	Mullica River	47	Tindall Island	528
Eagle Manor B	711	Nantuxent Creek A	102	Tocks Island	359
Eagle Point B	162	Nantuxent Creek B	181	Trenton	341
East Amwell	712	Nantuxent Creek D	261	TSG	451
Eco-Lawrence	749	Navesink B	514	Tuckahoe A	104



Table 1. Production and estimated dates for Bald Eagle nests in NJ, 2024. T = territorial pairs.

Nest	Incubation	Hatching	Banding	Fledging	# Fledged	Failure Date	Notes
Allamuchy Pond	3/8						new pair
Alloway Lake	2/10	3/13		5/22	1		new nest
Alloways Creek C	2/10				0	5/13	
Alloways Creek E	1/27	3/8		5/22	3		
Alloways Creek F	1/27	3/1		5/22	1		
Arrow Island	2/25	4/3			0	4/26	new pair; female killed 4/23 by vehicle strike
AshBrook	2/16	3/21		6/19	1		
Atlantic City	2/27	4/1		7/11	2		
Atlantic Highlands	3/1				0	4/25	new pair
Audubon	2/20	3/26		6/12	2		
Avalon	2/22	3/7		6/6	1		new pair
Ballanger Creek East	2/29	3/29		6/15	1		new nest
Bassetts Bridge (Wallkill)	2/24	3/30		7/8	2		new nest
Bayonne		3/9			0	6/2	new pair
Bay Point Road A	T						
Bay Point Road B	2/6	4/2		5/28	1		
Bayside A	2/11	3/29		6/8	1		
Bayside B	2/11	3/29		6/8	1		
Beaver Dam-North	2/19	3/26		6/22	1		
Beaver Dam (osp.)	2/26	4/4		6/22	1		
Beaver Dam-West	2/19				0	3/18	
Beesley's Point	T						
Berrys Creek	2/21	3/31		6/24	2		
Bidwell (East)	<4/9				0	5/8	aerial survey 4/9
Blairstown	2/22	3/28			0	5/25	new nest
Blews Run	2/19				0	3/18	
Bogota	T						
Boonton	2/3	3/11					
Branchburg	2/18	3/30		6/3	1		
Bridgeton	2/5	3/12		5/28	1		
Bridgeton-Garfield	1/29	3/12		5/28	2		
Brielle (Tr. Is)	2/1	3/15		6/7	2		
Buckhorn	2/10	3/29		6/8	2		
Bulls Island	2/8	3/14		6/4	2		
Burlington Island	2/12	<4/26					
Bustleton CR	2/1	3/7		5/17	1		
Buttermilk	2/2	3/1		5/20	2		

Nest	Incubation	Hatching	Banding	Fledging	# Fledged	Failure Date	Notes
Canoe Brook (Reservoir)	3/1				0	5/7	
Cape May	2/12	3/25		6/13	2		
Carasaljo	3/13	4/29		7/23	1		
Carmel	~1/29	~3/4		5/20	2		new nest
CCIA (Cumberland)	2/25				0	4/21	new nest
Cedar Hill (Cumberland)	1/30				0	3/29	
Cedar Run (Ocean)	T						
Cedar Swamp Creek	2/22	4/12			0	5/6	
Cedarville Cell Tower	1/8	2/19		5/14	1		
Centerton	2/5	3/13		5/28	1		
Chatsworth	~2/26	4/18		6/17	1		
Chatsworth B	~2/26	4/18		6/17	1		
Chesterfield	3/21	4/25		7/22	1		
Chester Island	2/22	<5/14		6/26	1		
Clinton	2/14	3/25		6/14	2		new nest
Cohansey (Detullio)	2/8	3/14		6/26	2		
Cohansey (Greenwich A)	2/18				0	4/3	
Cohansey (Greenwich B)	<3/18	3/24			0	4/3	
Cohansey (Hopewell East)	2/5	3/17		6/3	1		
Cohansey (Hopewell West)	2/5	3/10					
Cohansey (Middle Marsh A)	2/18				0		
Cohansey (Middle Marsh C)	2/18						
Cohansey (Middle Marsh D)	2/18	3/24			1		
Cohansey (Middle Marsh E)	2/18				0	4/3	
Cohansey (Ragged Island)	2/18	3/24					
Cohansey (Tindells Landing)	2/18				2		
Cohansey CC	1/22	3/4		5/21	2		
Columbus tower	1/21	2/22		6/6	1		
Corbin City	2/19	3/12		5/10	1		
Cranbury Neck	2/11	3/4		6/5	2		
Cross Farm	2/10	3/11			0	4/6	
Crosswicks Creek	3/16	4/20		7/2	1		
Crosswicks Creek B	1/30	3/14		6/5	2		
Culvers Gap	2/15	3/29		6/12	1		new nest
Daretown	1/29	3/4		6/20	2		
Deepwater	2/23	4/2		6/26	1		new nest
Delanco	2/20	4/4		6/17	2		
Dennis Creek 2	2/4	4/5		6/12	2		

Nest	Incubation	Hatching	Banding	Fledging	# Fledged	Failure Date	Notes
Denville	2/27	4/5		6/15	2		
Devil's Gut	2/27	4/6		6/23	1		new nest
Dias Creek (East)		3/13					aerial survey 4/8
Dingman's Ferry	3/12				0	4/3	Female killed by vehicle 3/28
Dividing Creek	2/19	3/26		6/22	3		
Dividing Creek B	1/29	3/12		6/3	3		
Donaldson	3/4	4/14		7/6	1		new pair
Duffield Run	2/10	3/16		6/7	1		
Duke (Raritan River)	1/22	2/29	4/15	5/22	2		
DuPont/Raccoon Creek	2/24				0	4/11	
Eagle Manor A	2/18						
Eagle Manor B	3/24				0	4/3	
Eagle Point B	12/15				0	2/3	
East Amwell	2/19	3/25		6/17	2		
Eco-Lawrence	T						new pair
Edgewater	1/1	2/5			0	3/20	
Egg Harbor	2/11	2/15					aerial survey 3/14
Egg Island	2/13	3/23	5/7	6/15	1		
Elmer	2/7	3/15		6/27	1		
English Creek	<3/14						aerial survey 3/14
Far Hills/Ravine Lake	2/14	3/20		6/12	2		
Ferry Road	2/27	4/9		6/29	2		
Fishing Creek	?				0	?	aerial survey 4/8
Five Mile Run	2/16	3/22			0	4/6	nest tree fell 4/6
Flat Top	2/18	3/24			0	4/3	
Forked River	T						
Fortescue	2/19	3/26		6/3	1		
Fortescue C	2/26	4/4			0	4/14	
Fortescue D	2/12	3/26		6/14	3		
Fort Dix B					2		
Fort Mott		4/26		6/2	2		
Fresh Creek	3/15	4/7		6/2	1		
Gibbstown	1/23	3/12		6/4	1		
Great Bay Blvd.		~3/12					new nest; found aerial survey 5/21
Great Swamp	1/24	3/14					
Green CR	1/29	3/1		6/10	1		
Grossup	1/13	2/27		5/16	2		
Hack Site	T						

Nest	Incubation	Hatching	Banding	Fledging	# Fledged	Failure Date	Notes
Hackett (Salem)	2/5	3/24		6/23	2		
Hackettstown	3/4	4/8			3		
Hansey Creek	<3/13	4/4			0	4/9	new nest
Harmony	2/20	3/26		6/10	2		
Hartshorne Woods Park	2/8	3/29		6/3	1		
Heislerville		3/14					aerial survey 3/14
Heislerville B	<3/14						new pair; aerial survey 3/14
Horicon Lake	T						new nest
Husted's Landing	T						
Hyper Humus	3/8						new nest
Jacobstown	3/20				0	4/29	
Jake's Landing	2/5	3/19		6/11	2		new pair
Johnson Park	T						
Keansburg	2/25	3/30			0	4/7	
Kearny	T						
Kearny Marsh		4/16		7/9	1		new pair
Keasbeys Creek	2/24				0	4/7	
Kettle Creek	2/16	3/30		6/11	2		
Kin-Buc	2/18	3/21		6/9	1		
Kirkwood Lake	2/26	4/16		6/30	1		chick found on ground 7/7;died 7/9
Labar Island	2/7	3/13		5/31	1		
Lake Hopatcong B	3/4	3/25		6/13	2		
Lake Lenape	<3/14						aerial survey 3/14
Linden	T						
Little Swartswood	T						
Lockatong Creek	T						new nest
Long Bridge	2/25	4/6		6/15	2		
Lower Patcong	2/5	3/24			0	4/30	
Ludlum Bay		<3/27					new pair; nest found with chick/s
Mad Horse Creek	2/6	3/29		6/8	2		
Major Run	2/25	4/19		6/11	2		new pair
Makepeace Lake	<3/14			6/16	1		aerial survey 3/14
Manasquan Reservoir	2/26				0	4/2	
Manasquan River	1/27	3/4	4/17	6/5	1		
Mannington Meadows A (Horne Run)	4/14	5/15		7/13	2		new nest
Mannington Meadows C	3/10	5/16		7/13	1		
Mantua A4	3/4				0	3/16	
Mantua Creek B				6/11	2		

Nest	Incubation	Hatching	Banding	Fledging	# Fledged	Failure Date	Notes
Manville	2/8				0	2/26	
Mary Elmer	3/19	4/23		7/2	1		
Mattison Reservoir	2/14	3/24		6/27	3		
Matawan Cell	T						
Matts Landing 2	T						nest is gone
MR(Burcham)					1		new nest
MR (Dorchester)	<3/14						aerial survey 3/14
MR (Millville North)	2/6	3/16		6/7	2		
MR (Muddy Run)	2/16	3/25		6/14	1		
MR (Peek Preserve)	~1/18				0	~2/22	
Medford				<7/7	2		new nest
Mercer County GC	T						new nest
Merchantville	3/4	4/8		7/9	2		
Merrill Creek A	2/23	~3/29		6/25	1		
Merrill Creek B	2/23	3/29		6/10	2		
Mickleton	2/20	3/21		6/18	1		
Miery Run	2/17	3/23		6/11	2		new pair
Milford	2/14	3/26		6/23	3		
Millhurst	2/25	4/5		6/19	1		
Mond's Island	2/15	3/26		6/25	2		
Money Island	2/19				0	3/12	
Monksville Reservoir	3/19	5/17		7/30	1		
Mountain View	1/22	3/7			0	4/10	
Mt Airy	1/29	3/6			0	4/3	storm or predation
Mullica River	T						
Nantuxent Creek A	2/19				0	3/18	
Nantuxent Creek B	1/29				0	2/19	
Nantuxent Creek D	2/2	3/12		5/28	2		
Navesink B	1/22	2/26		5/22	1		new nest
New Hampton	T						
Newport B	3/12	4/14		6/22	1		
Newport C	2/6	4/14		6/22	1		
Newport D	3/15	4/14		6/22	1		
Newton Reservoir	2/7	3/12		6/10	2		
Norburys	T						new pair
Nutley	T						
Oberlin	<2/28	3/14		6/6	1		
Oceanville	2/26				0	3/12	

Nest	Incubation	Hatching	Banding	Fledging	# Fledged	Failure Date	Notes
Oldman's Creek	2/13				0	3/12	
Oldwick	2/7	3/30		6/7	1		
Oradell Reservoir	3/17				0	4/13	nest tree fell
Overpeck Creek	3/14	4/20		7/4	1		
Paradise	2/19	3/25		7/5	1		
Parsippany	2/3	3/11			0	3/24	
Parsonage Run	U	3/3		6/1	2		
Parkers Creek	2/21	3/25		6/13	2		
Patcong B	2/25	3/31		6/17	1		new nest
Paterson	3/12	4/16		7/9	2		
Pedericktown	2/22	3/12		6/3	1		
Pemberton	2/1	3/16		6/10	1		
Pennington	3/3	4/5	5/17	6/23	2		
Penns Grove	3/10	4/15		7/6	2		
Pennsauken CC	2/20	4/9		6/13	2		
Penns Neck A	3/10	4/20		7/14	1		new nest
Penns Neck B	2/27	3/21		7/14	1		new nest
Pilesgrove	2/4	3/10		5/13	1		
Pine Tavern	1/15	2/22		5/22	1		
Pine Tavern B	2/8	3/16		7/17	1		
Pointers Auburn	3/10	4/6		7/6	2		
Pointers Auburn B	2/8	3/24		6/23	1		
Point View Reservoir	T						
Poxono Island	2/26	4/5		6/26	2		
Prospertown	2/7	3/5	4/17	6/18	2		
Quinton	2/10	3/22		7/23	1		
Quinton B	T						
Quinton C	3/8	4/7		6/20	1		new nest
Rainbow Lake	2/12	3/18		6/22	3		
Rancocas B Tower	2/29	4/4		6/13	2		
Raritan-Keasbey	2/25	4/4		6/29	2		
Readington	2/14	3/25		6/9	2		
Repauno	2/15	3/26		6/17	1		
River Edge	2/21	3/29			0	5/15	new nest
Riverview	2/13				0	2/23	
River Barge Park	3/4	4/8		6/29	2		
Robbins Lane	2/12	3/26		6/22	3		
Robbinsville	1/30	2/24		5/20	2		

Nest	Incubation	Hatching	Banding	Fledging	# Fledged	Failure Date	Notes
Round Valley	3/8	4/12		7/31	2		
Sadie Lane	2/4	<3/17		6/9	1		
Salem River		<4/7		7/11	2		
Sayres Neck	2/6	3/26		6/3	3		
Sayres Neck B	2/19				0	4/1	
Sayres Neck C	2/19	3/26		6/14	2		
Sayreville	T						
School House	2/19	3/26		6/14	2		new nest
Seabrook	1/13	2/27		5/16	1		
Sea Breeze B2	T						
Sea Breeze Abbot Crk	2/18						
Sedge	2/11				0	3/30	new pair
Seeley-Cohansey	<3/15				0	5/28	new pair
SFE A	1/13	2/27		6/22	3		
SFE Tower B	1/13	2/27			0	4/26	
Shark River	2/4	3/13		6/5	2		
Sheepkill Pond	2/12	3/26			0	4/9	
Shiloh Tower	2/6	3/29		6/8	1		
Silver Lake	2/15	3/19		6/17	1		
South Dennis	T						
South River-Atlantic	2/14	4/2		7/6	2		
Stafford-Beach	2/3	3/9		6/2	1		
Stillwater (Paulins Kill)	2/27	4/2		6/18	1		
Stipson Island Area	<3/13						new nest; aerial survey 3/14
Stow Creek North (Canton) A	3/11	4/6		6/22	1		
Stow Creek E	3/3	4/14		6/22	1		
Stow Creek F	3/22	4/14		6/22	1		
Stow Creek G	2/25	4/14		6/22	3		
Stow Creek H	3/22	4/6		6/22	1		new pair
Sunset Lake	2/6	3/26			0	4/9	
Supawna Meadows A	3/3	4/7		6/22	1		
Supawna Meadows B	3/10				0	4/14	
Supawna West	2/21	4/8		6/19	2		
Swedes Run Crossing	T						new pair
Swedesboro (Birch Creek)	2/10	3/12		6/26	1		
Sylvan Lake tower	3/13	4/21		7/8	1		
Teaneck	1/25	2/29			0	4/5	new pair
Timber Creek	3/15	4/19		7/12	2		

Nest	Incubation	Hatching	Banding	Fledging	# Fledged	Failure Date	Notes
Tindall Island	2/6	3/29		6/10	1		
Tocks Island	2/25	4/1		6/20	2		
Trenton	T						
TSG	2/9				0	3/1	
Tuckahoe A	<3/14						aerial survey 3/14
Tuckahoe C	<3/14						aerial survey 3/14
Turkey Point A	2/19	3/26		6/15	1		
Turkey Point B	1/29	3/13		5/21	1		
Turnersville	1/30	3/6		6/4	2		
Upper Greenwood	2/26	4/1		6/20	2		new nest
Upper Millstone	2/25				0	3/27	
Upper Oldmans	2/5	3/13		6/5	2		
Upper Ramapo	2/24	3/30		7/5	2		
Wading River	T						
Wanaque A	3/1				0	3/29	
Wanaque B	3/6	4/10		6/12	2		
Wanaque C	2/6				0	4/16	new pair
Waretown	3/15	4/3		6/25	3		1 chick on ground 6/12
Warfle	2/26	4/4		6/22	2		
Wawayanda	2/24	4/1		6/22	2		
Weatherill	3/12	4/14		6/22	1		
Wheaton Island	3/15	4/17		6/22	2		
Wheaton Island B	3/15	4/17		6/22	1		
White's Pond	3/13				0	4/30	
Whiting	3/1	4/5		7/5	1		
Woodschurch	2/10	3/16		6/2	3		
Wreck Pond Brook	1/30	2/23		5/17	2		
Yards Creek		3/30					
<b>Total Nests Active</b>	<b>264</b>						
<b>Total Nests Known Outcome</b>	<b>241</b>						
<b>Successful Nests</b>	<b>182</b>						
<b>Young Fledged</b>	<b>288</b>						
<b>Failed Nests</b>	<b>59</b>						
<b>Nests Active Unknown Outcome</b>	<b>23</b>						
<b>Territorial Pairs</b>	<b>29</b>						
<b>Total Pairs Monitored</b>	<b>293</b>						



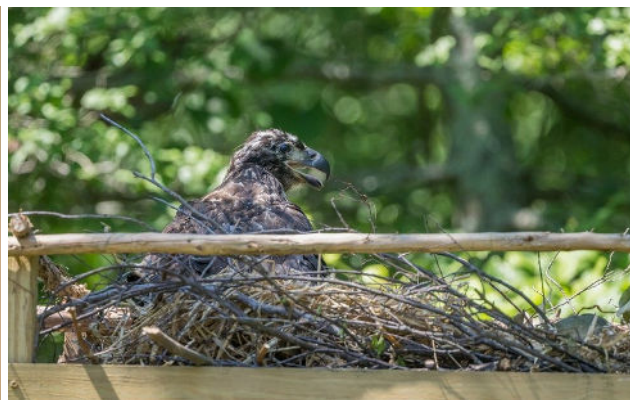
Table 2. Previously documented eagle nests that were not used or could not be documented in 2024.

Alloways Creek D	Hancock A	Pedricktown-cell
Assiscunk CR	Hancock B	Picatinny/Lake Denmark
Ballanger Creek West	Higbee	Pigeon Swamp
Barkers Brook	Lake Como	Port Norris
Bayberry-Kindle	Lake Hopatcong A	Princeton
Bear Swamp	Lake Mohawk	Ramblewood
Belleplain East Creek	Lambertville Tower	Rancocas Creek A
Blue Anchor	Little Meadow	Riggins Ditch
Bridgeport	Maca Rd	Rio Grande
Camden	Mad Horse B	Roadstown
Canton Drain	Mad Horse Island	Salem Chestnut
Cedar Lake (Gloucester)	Mannington Meadows B	Salem Nuclear
Cohansey (Hopewell Central)	Marshaltown	Sea Breeze A
Cohansey (Loatman)	Mason Point	Sheep Pen Creek
Cohansey (Middle Marsh F)	Matts Landing 1	Stanton Station
Cohansey (Sheppards Mill A2)	MR Bluffs	Stow Creek B
Cold Springs	MR (Mauricetown)	Stow Creek C
Davis Mill	MR (Millville)	Stow Creek D
Deepwater 03A	MR (Somes Drive)	Tindall Island B
Dennis Creek 1	Minisink Island	Tindall Island C
Eagle Point	Montague Hollow	Toll Bridge
Eagleswood	Morris Goodwin	Tuckahoe B
East Point	Mount Hope Lake	Union Lake
Edgewater Park	Navesink River/Res	Wantage
Elsinboro	Newport A	Williamstown
Fairgrounds	Newport E	Winslow
Foampak	Old Bridge	Woodbury A
Fort Dix A	Palisades B	Woodbury B
Gunning River	Palmyra Cove	Woodcliff Lake

## 2024 Season Highlights

### Notable Efforts

The Waretown nest provided some extra stress to eagle volunteers and staff this year after one of the 3 nestlings was found scampering around on the ground at just 8 weeks of age. It was treated at a nearby wildlife rehab facility to regain its strength. It was brought back to the nest location and placed in a temporary nest structure constructed by staff and volunteers that day and left with a supply of fish to eat. The nestling had other plans, unfortunately, and didn't want to stay in the substitute nest. It was then taken to wildlife rehab until it had basic flight skills. It was released back at the nest area with its parents and siblings nearby. This was the perfect example of excellent teamwork between many different people and organizations, and hopefully we get a resighting of H/54 one day to see how he's doing.



## Resightings and rehabs

There were 25 resightings and 11 rehabbed Bald Eagles in 2024.

Table 3. Bald Eagle resightings and recaptures in 2024.

Band Number	Color Band (green unless noted)	Date Resighted	Reporter	Location	State	Band Origin	Band Date	Comments
0709-06535	E/95	1/10/2024	L. Katz	Hackensack River	NJ	Bogota, NJ	6/25/2020	photographed
	green (right)	1/20/2024	D. DeSantis	Ridgefield Park	NJ			juvenile
0709-06556	B-21	1/21/2024	L. Surowiec	Sandy Hook	NJ	Ridgefield Park, NJ	3/27/2022	photographed
0709-06526	E/86	1/26/2024	D. Evans	Kirkwood	NJ	Mantua, NJ	5/20/2019	photographed
0709-06548	H/15	1/29/2024	J. Yates	Hudson River	NY	Pennington, NJ	4/8/2022	photographed
0679-01754	D/18	2/1/2024	J. Weiss	Brielle	NJ	Manasquan River, NJ	3/25/2011	F in Brielle pair
0709-06523	E/83	2/9/2024	G. Hansen	Mercer	NJ	Three Bridges, NJ	5/16/2019	photographed
0629-05432	A-77	2/18/2024	B. Wozniak	Lake Luxembourg	PA	Belleplaine, NJ	5/15/2001	photographed
	green (right)	2/19/2024	E. Vecchione	Mercer Lake	NJ			
0709-06506	E/65	3/1/2024		Downe Twp	NJ	Egg Island, NJ	5/4/2018	photographed
0679-03668	blue S3	3/4/2024	D. Hetherington	Readington	NJ	Connecticut	5/16/2016	F in Readington pair
0709-06539	E/99	3/16/2024	J. Blystone	Elkton	MD	Sylvan Lake, NJ	7/30/2020	photographed
0709-06537	E/97	3/18/2024	J. amEnde	Bombay Hook NWR	DE	Camden, NJ	7/9/2020	photographed
0709-06573	H/37	3/18/2024	B. Twombly	Hardy Pond, Waltham	MA	Manasquan River, NJ	5/3/2023	photographed
	P35	3/28/2024		Del Water Gap	PA	New York	2005	vehicle strike; F at Dingmans nest
	blue W/34	4/12/2024	A. Cannizzaro	Sylvan Lake	NJ	Virginia		photographed
	green (left)	4/13/2024	P. MacDonald	Newington	NH			1 <sup>st</sup> year bird
0709-06588	H/52	5/2/2024	Raptor Trust	Branchburg	NJ	South Branch, NJ	9/19/2024	3y F, rehabbed and released
0709-06559	B-25	5/13/2024	Raptor Trust	Belvidere	NJ	White Twp, NJ	6/5/2024	AD F treated for Pb, released
0709-06590	H/54	5/25/2024	NJFW	Waretown	NJ	Waretown, NJ	5/25/2024	rehabbed and released at nest site
0709-06587	H/51	5/14/2024	Mercer Wildlife	Hamilton	NJ	Mercer Wildlife	6/8/2024	AD M rehabbed and released
0629-45838	B-18	7/1/2024	Tri-State Rescue	Dividing Creek	NJ	Tri-State Bird Rescue	7/11/2024	AD M rehabbed and released
	unbanded	7/1/2024	Toms River Avian	Bradley Beach	NJ	NA	NA	AD rehabbed and released
0709-06587	H/51	7/29/2024	N. Wucinski	Lawrenceville	NJ	Mercer Wildlife	6/8/2024	
0629-45839	B-19	8/13/2024	Tri-State Rescue	Salem Co Landfill	NJ	Tri-State Bird Rescue	8/20/2024	AD F rehabbed for toxins, released
0629-45887	B-82	8/20/2024	J. Davoli	Newton	PA	Walpack, NJ	6/3/2004	
0709-00744		9/11/2024	K. Clark	Buttville	NJ	Port Royal, VA	5/7/2015	hit by vehicle, rehabbed, released
0709-01616	E/26	9/20/2024	J. Kosowsky	White Horse	NJ	Prosperstown, NJ	4/8/2016	photographed
	green (right)	9/25/2024	M. Gorman	Forsythe NWR	NJ			3 <sup>rd</sup> year bird
	green H/??	9/25/2024	R. Nicol	Forsythe NWR	NJ			photographed

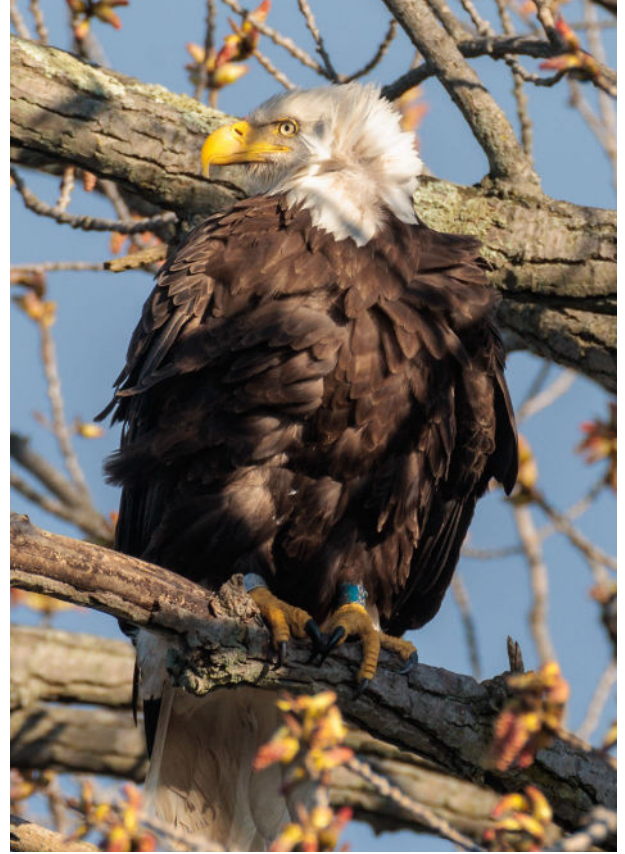
<b>Band Number</b>	<b>Color Band (green unless noted)</b>	<b>Date Resighted</b>	<b>Reporter</b>	<b>Location</b>	<b>State</b>	<b>Band Origin</b>	<b>Band Date</b>	<b>Comments</b>
0709-01562	D/72	10/9/2024	B. Wurst	Barnegat Light	NJ	Navesink, NJ	5/1/2013	resighted on nest camera
unbanded		10/29/2024	Mercer Wildlife	East Windsor	NJ			HY F currently in rehab
0629-45833	E/69	11/5/2024	Mercer Wildlife	Upper Freehold	NJ	Mercer Wildlife	1/10/2025	rehabbed and released
0709-06576	H/40	12/12/2024	R. Nicol	Forsythe NWR	NJ	Rainbow Lake, NJ	6/15/2023	photographed
0679-01761	D/25	12/12/2024	R. Nicol	Deerhead Lake	NJ	Manasquan River, NJ	4/20/2011	photographed
0709-06572	H/36	12/13/2024	R. Nicol	Forsythe NWR	NJ	Manasquan River, NJ	5/3/2023	

*Photos of some resighted eagles:*

H/37 photographed by Brian Twombly in Waltham, MA on 3/18/2024; banded 5/3/2023 at the Manasquan River nest in NJ.



Blue W/34 photo by Anthony Cannizzaro at Sylvan Lake, NJ on 4/12/2024; banded in Virginia.



H/36 photographed by Rich Nicol at Forsythe NWR, NJ on 12/13/2024; banded with sibling H/37 (above) on 5/3/2023.





E/97 photographed 3/18/2024 by Jerry amEnde at Bombay Hook NWR, DE; banded 7/9/2020 in Dividing Creek (original nest site in Camden), NJ.



E/99 photographed 3/16/2024 by John (Dick) Blystone in Elkton, MD; banded 7/30/2020 at Sylvan Lake, NJ.

## Mortalities

There were 58 documented Bald Eagle mortalities in 2024. These are birds that were either found dead, died in care, or euthanized due to their injuries. Necropsies have been completed on 54 of these birds. The causes of death include general impact trauma (14), electrocution (9), eagle combat (8), vehicle impact (8), HPAI (6), unknown (5), disease (1), train impact (1), lead Pb (1), and leghold trap (1).

\*reported in 2023 eagle report but were not necropsied until 2024. They are not included in the totals above.

Table 4. Bald Eagle mortalities in 2024.

Date Found	Location Found Town (County)	Age	Sex	Facility	Origin	Comments
9/25/2023*	Cape May Airport (Cape May)	imm	F	Tri-State Bird Rescue	unk	found dead, impact trauma
10/2/2023*	Franklin (Gloucester)	Adult	M	Mercer Wildlife	unk	found dead, impact trauma
1/1/2024	Hammonton (Atlantic)	4Y	F	Mercer Wildlife	unk	found dead, unknown cause
1/9/2024	Pilesgrove (Salem)	4Y	F	Tri-State Bird Rescue	unk	found grounded, impact trauma, euthanized
1/15/2024	Bridgeton (Cumberland)	Adult	F	Tri-State Bird Rescue	unk	found dead, eagle attack, possible HPAI
1/24/2024	Salem (Salem)	Adult	M	Tri-State Bird Rescue	unk	found dead, eagle combat
1/30/2024	Greenwich (Cumberland)	Adult	F	Tri-State Bird Rescue	Galloway	A-84 banded 5/22/2001. Eagle combat, euthanized
1/31/2024	Milmay (Atlantic)	Adult	M	Tri-State Bird Rescue	unk	found dead, vehicle impact
1/31/2024	Saddle River (Bergen)	Adult	F	NJFW - Clinton	unk	found dead, HPAI confirmed
1/31/2024	Franklin (Gloucester)	HY	F	Tri-State Bird Rescue	unk	found dead, unknown cause
2/9/2024	Southampton (Burlington)	Adult	M	NJFW - Clinton	unk	found dead, eagle combat
2/9/2024	Wrightstown (Burlington)	SY	M	NJFW - Clinton	unk	found dead, unknown cause
2/16/2024	Upper Deerfield (Cumberland)	Adult	F	Tri-State Bird Rescue	unk	found dead, electrocution
2/18/2024	Woodbine (Cape May)	4Y	F	Tri-State Bird Rescue	unk	found injured, trauma, euthanized
2/21/2024	Millville (Cumberland)	Adult	M	Tri-State Bird Rescue	unk	found grounded, eagle combat, euthanized
2/21/2024	Raritan (Middlesex)	Adult	F	NJFW - Clinton	unk	found grounded, hit by train, died in care
2/22/2024	Upper Deerfield (Cumberland)	Adult	M	Tri-State Bird Rescue	Nantuxent	A-35 banded 5/19/1998. Found grounded, vehicle impact, died in care
2/24/2024	Cranbury (Middlesex)	Adult	F	NJFW - Clinton	unk	found dead, HPAI confirmed
2/27/2024	Emerson (Bergen)	3Y	F	NJFW - Clinton	unk	found grounded, Pb toxicity, died in care, HPAI confirmed
3/11/2024	Ocean City (Cape May)	Adult	NA	Tri-State Bird Rescue	unk	euthanized, Pb toxicity
3/11/2024	Trenton (Mercer)	Adult	M	Tri-State Bird Rescue	unk	found dead, eagle combat
3/13/2024	New Egypt (Ocean)	Adult	F	Mercer Wildlife	unk	hit by truck, previously shot
3/16/2024	Hamilton (Mercer)	Adult	M	NJFW - Clinton	unk	found dead, impact trauma?
3/19/2024	Pilesgrove (Salem)	4Y	F	Tri-State Bird Rescue	unk	found injured, unknown trauma, euthanized
3/21/2024	Middletown, Delaware	Adult	F	Tri-State Bird Rescue	Stow Creek	A-04 banded 5/5/1995. Eagle combat, euthanized
3/22/2024	Princeton (Mercer)	Adult	F	NJFW - Clinton	unk	found dead, HPAI confirmed
4/23/2024	Route 80	Adult	F	Mercer Wildlife	unk	hit by vehicle; F at Arrow Island (nest then failed)
4/23/2024	Cinnaminson (Burlington)	Adult	M	Tri-State Bird Rescue	unk	died in residential yard, trauma
4/28/2024	Bedminster (Somerset)	Adult	M	Mercer Wildlife	unk	hit by vehicle, euthanized

Date Found	Location Found Town (County)	Age	Sex	Facility	Origin	Comments
5/18/2024	Mercer	HY	F	Mercer Wildlife	unk	Impact trauma
6/14/2024	Alloway (Salem)	Adult	M	Tri-State Bird Rescue	unk	found dead, eagle combat/impact with ground
7/1/2024	Swedesboro (Gloucester)	Adult	F	Tri-State Bird Rescue	unk	found dead, electrocution
7/7/2024	Kirkwood (Camden)	HY	F	Tri-State Bird Rescue	Kirkwood	fledgling found grounded, died in transport, possible West Nile Virus?
8/7/2024	Salem (Salem)	HY	F	Tri-State Bird Rescue	unk	found dead, electrocution
8/20/2024	Tuckahoe (Cape May)	Adult	F	Tri-State Bird Rescue	unk	rescued from river, died in transport, impact and drowning
8/25/2024	Stockton (Hunterdon)	HY	unk	NJFW - Clinton	unk	caught in a leghold trap, euthanized
8/27/2024	Salem (Salem)	4Y	M	Tri-State Bird Rescue	unk	found dead, impact trauma
8/28/2024	Vernon (Sussex)			NJFW - Clinton		found dead near road, necropsy pending
9/3/2024	Mullica (Atlantic)			NJFW - Winslow		found dead near railroad tracks, necropsy pending
9/3/2024	Kearny (Hudson)	4Y	F	Mercer Wildlife	unk	found dead, trauma
9/10/2024	Lafayette (Sussex)	HY	F	Tri-State Bird Rescue	unk	found dead, electrocution
9/11/2024	Branchburg (Somerset)	Adult	F	Mercer Wildlife	unk	found dead, electrocution
9/15/2024	Williamstown (Gloucester)	Adult	F	Tri-State Bird Rescue	Princeton	E/81 banded 5/16/2019. Found dead, probable electrocution
9/16/2024	Tuckahoe (Cape May)	HY	F?	Tri-State Bird Rescue	unk	found injured, died in care, impact trauma & asperillus
9/20/2024	Goshen (Cape May)	Adult	F	Tri-State Bird Rescue	unk	found injured, eagle combat, euthanized
9/23/2024	Assunpink Lake (Monmouth)	Adult	F	Tri-State Bird Rescue	unk	eagle combat (observed) and drowning
9/24/2024	Hampton (Sussex)	3Y	M	Tri-State Bird Rescue	unk	found dead, electrocution
9/28/2024	Pilesgrove (Salem)	AD	M	Tri-State Bird Rescue	unk	found dead, electrocution
9/30/2024	Delmont (Cumberland)	HY	M	Tri-State Bird Rescue	unk	found dead, electrocution
10/4/2024	Beaver Swamp (Cape May)	Adult	F	Tri-State Bird Rescue	unk	found grounded, died in transport, trauma?
10/10/2024	Cedarville (Cumberland)			NJFW - Tuckahoe	unk	found dead, necropsy pending
10/25/2024	Lopatong (Warren)	Adult	F	NJFW - Clinton	unk	found dead, vehicle impact
11/1/2024	Cinnaminson (Burlington)			Cedar Run	unk	only foot found
11/2/2024	Clinton (Hunterdon)	4Y	M	NJFW - Clinton	unk	found dead on I78, vehicle impact
11/3/2024	Lower Alloways Creek (Salem)	Adult	M	Tri-State Bird Rescue	Mannington	C/91 banded 5/13/2009. Impact trauma, died in rehab
11/12/2024	Alloway (Salem)	Adult	M	Tri-State Bird Rescue	unk	found injured, trauma (eagle combat and vehicle?), euthanized
11/18/2024	Cedarville (Cumberland)	Adult	F	Tri-State Bird Rescue	unk	found injured, trauma (eagle combat?), euthanized
11/19/2024	Little Hills (Bergen)			The Raptor Trust	unk	found grounded, died in transport, necropsy pending
12/3/2024	Princeton (Mercer)	Adult	M	Mercer Wildlife	Medford	E/84 banded 5/21/2019. Found dead, HPAI confirmed
12/23/2024	Middleton (Monmouth)	3Y	M	Toms River Avian	NY	vehicle impact

*Our sincere thanks to everyone who pitched in to help rescue, transport, and treat eagles!  
Those interested in helping, please look for the new Raptor Alliance group! Organization and training will continue in 2025. Follow at [www.NJRaptors.org](http://www.NJRaptors.org).*



## **Acknowledgments**

### ***We thank these people for their work to preserve and protect Bald Eagles in New Jersey:***

Christine Alber, Bianca & Edward Aniski, Michael Awertschenko, Phyllis Baker, Bob Behrent, Alice Belthoff, Spence Bennett, Dawn Berggren, Denise Bittle, John & Karen Blaszczyk, Margaret & Chuck Blewett, Blake Alan Bohinc, Tina & Doug Borden, Peter Bosak, Dennis Briede, Frank Budney, Karin & Kevin Buynie, Bob & Sandy Caggiano, Karyn Cichocki, Bunny Clegg, Tina & Rick Clegg, Dr. Patrick Connelly, Christopher Compel, Jack Connor, Diane Cook, Doug Cossaboon, Alex Couchoud, Jeffrey Crawn, Jim Crossin, Susan Cuthie, Sally DeLorean, Michael Denisi, Darlene DeSantis, Dennis Ditzig, Barbara & Frank Dobrovics, David Donnelly, Cliff Durlacher, Landis Eaton, Stacy Emery, David Evans, Alexis & Bryan Everingham, Maryann & Bill Fahey, Evan Federici, Peggy Ferry, Conrad Fiore, Arthur Foran, Gretchen Fowles, John Fox, Peter & Jane Galetto, Victor Gano, Keara Giannotti, Margaret Giuffre, Michelle Gober, Colleen Graham, Bill Griffith, MacKenzie Hall, Jim Harding Sr., Susan & Armit Harrison, Brian Harrison, Tess Harrison, Brian Hasty, John Healy, Bonnie Hart & Ted Henning, Dallas Hetherington, Mary Ellen Hill, Robert Hofstrom, Matt & Kelly Holman, Earl & Mary Ellen Holton, Leroy Horner, Michael Janusz, Karin Johanson, Jim & Rose Joy, Brian & Gina Katz, Lisa Katz, Ron Kegel, Kevin Kelly, Deb Kilmer, John King, Jonathan Klizas, Joseph Koscielny, Dede Kotler, Daniel Kroon, Paul Larson, Tammy Laverty, Cheryl Leonard, Paul Lenzo, Ashlee Lloyd, Randy Lubischer, Claire Luisi, Nancy Luttmann, Gina & George Mackey, Tom Mauro, Jeff Mazzola, Pete Meehan, Ed McCay, Jim McClain, Barbara & Rick McKee, Tom McKelvey, Sandy McPhail, Kristina Merola, Belford Miller, Joe Mish, Christine Moran, Jordan Moreno, Jim Mulvey, Jared Myers, Inge Neff, Steve Neumann, Kristen Nicholas, Rich Nicol, Nancy & William Nordling; Luis Ocasio, Marianne Ofenloch, Linda Palmer-Hofmann, Malcolm & Terry Parker, Andrea Passarella, Kumar Patel, Dennis Peterson, Tony Petrongolo, George Pitcher, Donna and Heiki Poolake, Anne Price, Roger & Valerie Pullen, Harry Quinn, Kristen Ramer, Linda Rapacki, Kevin Redden, Ann Reeves, Bill Reinert, John Resto, Lisa & Ricky Romero, Daniel Rossi, Dennis Ruffe, Wayne Russell, Kathy Salber, Joe Sapia, Mary Semler, Nancy Scarafille, Bill Scullion, Jeffrey Schaffer, Michael Schimpf, Michael Shimp, Vicki Schmidt, Rick Sedevic, Timothy Shaheen, Toby Sank, Giselle Smisko, Dannah Smith, Roger & Terry Smith; Anne Stiles, Keith Strockbine, Bill Stuempfig, Clay & Pat Sutton, Kacy Symanski, Christopher Takacs, Brandy Thorward, Alex Tongas, Don Torino-Bergen County Audubon, Brittany Trainor, Helen Trammell, Matthew Tribulski, Craig Truitt, Barbara & Alan Typinski, Gordon Wallace, Sharon and Wade Wander, Mary Watkins, the Wells Family, John Weidner, TeddiLynn Welden, Jeffrey & Cathy White, Walt Wilkins, Abby Wilkens, Laurie Youmans, Ken Witkowski, Wendy & Walter Wojtaszek,. Thanks to; Jack McCrossin–Citgo Petroleum Corporation; Scott Northey & John Dougherty– Chemours; Charles Barreca, Nora DiChiara and Duke Farms staff; John Spinapont and staff of Wall Township Public Works Department; Mark Stevenson–Fort Dix; Dr. Bill Rives–Six Flags Great Adventure; Joseph Weber–Logan Twp MUA; Diane Nickerson–Mercer Co. Wildlife Center; Mercer County Park Commission; John Parke & Joe Codis–Merrill Creek Reservoir; Monmouth County Parks; Steve Eisenhauer, Brian Johnson & Zac Bohm–Natural Lands; Tom Koeppel, Chief Forester of the Newark Dept. of Water and Sewer Utilities; Newark Watershed Conservation & Development Corp; Kevin Keane–New Jersey American Water; Christine Kusior of Spruce Run; Niko Roose & Deidre Supple–Round Valley Recreation Area; Stephanie Vannais and Marsha Apffel at the D & R Canal State Park; Bill Caldwell and Jim Markel–Unimin; Richard Steady at Weeks Marine; Cape May County Zoo staff: Jennifer Berg, Joseph Parsons, Kimberly Simpkins & Lindsey Steelman; Tim Eustace and staff–Wanaque Reservoir; Jack Smalley and staff–Newton Reservoir; Bill Seagraves and Henry Patterson III–NJ Water Supply Authority; Richard Lear, Eric Gehring and Julia DeRosso–Middlesex County Office of Parks and Recreation; Russell Downey, Land Manager/Director–Pfizer, Inc., Blanca Chevrestt and Parks & Forestry staff–Swartswood; Emile DeVito–NJ Conservation Foundation; Barry Dirkin and Burlington County Parks staff; Warren Schultz, Laura Kroon Bush, Tom Sheppard–Hunterdon Co. Parks, Sandy Bonardi and Ken Habermann–Palisades Interstate Park Commission; NJ Meadowlands Commission staff; Kara Deutsch–Delaware Water Gap National Recreation Area; David Sullivan –Delaware Quarries-Inc; Ernie Kabert, Matt Bozzuffi, John Czopoth -- Worthington State Forest.

We thank Cape May County Department of Mosquito Control and New Jersey Forest Fire Service for aerial survey support. Special thanks to NJDEP Fish & Wildlife Conservation Police Officers for protecting the state's eagles.

We are grateful to Dr. Erica Miller for expert veterinary support in the field and lab. Veterinary care was provided by these licensed wildlife rehabilitation centers: Tri-State Bird Rescue & Research, Mercer County Wildlife Center, The Raptor Trust, Toms River Avian Care, and the Avian Wildlife Center.

*This project is funded by people who donate to the NJ Tax Check-Off for Wildlife and buy Conserve Wildlife license plates, and by the U.S. Fish and Wildlife Service's Wildlife and Sportfish Restoration Program*



*Little Egg Foundation provides the support for NestStory, the nest tracking program that allows real-time compilation of eagle nest data in NJ.*



#### Literature Cited

- Bowerman, W., D.A. Best, J.P. Giesy, T.J. Kubiak, and J.G. Sikarskie. 1994. The influence of environmental contaminants on bald eagle (*Haliaeetus leucocephalus*) populations in the Laurentian Great Lakes, North America. P 703-791 in BU Meyburg & RD Chancellor, eds, Raptor Conservation Today. Pica Press, London.
- U.S. Fish and Wildlife Service. 2009. Post-delisting Monitoring Plan for the Bald Eagle (*Haliaeetus leucocephalus*) in the Contiguous 48 States. U.S. Fish and Wildlife Service, Divisions of Endangered Species and Migratory Birds and State Programs, Midwest Regional Office, Twin Cities, Minnesota. 75 pp.